

education otherwise



'Welcome Autumn' by Jet (7)

Newsletter
Autumn 2017

SEND YOUR CONTRIBUTIONS FOR THE NEXT ISSUE

Please mark material 'for publication' and include your name, address, phone number and email, as we may need to contact you to discuss your contribution (though details may be withheld from publication on request). Email contributions will be acknowledged within a few days.

If you require a postal acknowledgement please enclose a stamped, self-addressed envelope. If no acknowledgement is received, or in case of queries, please contact the Publications Secretary (see inside back page). *Please also ensure your EO membership is up to date before submission.*

Deadline for the Winter issue is 1st November 2017

Please send contributions via Section Editors or Newsletter Co-ordinator:

Anne Rix (Acting) eonl@educationotherwise.org

[Postal contributions to: **EONL Co-ord, PO Box 63, Swaffham, PE37 9AT**]

N.B. EO address for general correspondence:

2 Senlac Green, Uckfield, East Sussex, TN22 1NN

~~~~~

### Section Editors

**REVIEWS – Kerri:** bookreviews@educationotherwise.org Or: EO Reviews, PO Box 63, PE37 9AT

*Got an idea for a section you'd like to edit? An interesting HE story? A query? Or want to get in touch with another contributor – Contact Newsletter Co-ordinator: eonl@educationotherwise.org*

### DISCLAIMER

The opinions in this publication are those of the contributors and not necessarily those of the co-ordinator, section editors, nor of Education Otherwise as a whole. This newsletter is compiled by volunteers and its primary purpose is to provide support and communication between members.

All contributions have been accepted in good faith. Inclusion does not imply endorsement by Education Otherwise Association Ltd., which cannot be held responsible for the information, goods or services provided, or any consequences arising from them.

### EDITORIAL POLICY

Submission does not guarantee publication. EO reserves the right to edit or reject contributions in line with editorial policy.

**PLEASE NOTE:** *We normally print only first name and Town or County of adult EO members. If you wish you may use a pseudonym, but we still need your full name and address for administrative purposes.*

**CHILDREN'S CONTRIBUTIONS:** *We print first name and age – but again, we also need family name and contact details (of parent). We do not print anonymous contributions.*

### COPYRIGHT

Any item published in this newsletter may be reprinted in other home education magazines in the UK or abroad, or on the Internet. If you do not want your contribution reproduced without your consent, please state clearly that you wish to retain the copyright.

If you submit material in which you do not hold the copyright, please indicate the source so that we may seek permission to publish.

**IF YOU CHANGE YOUR ADDRESS, PHONE NUMBER, EMAIL OR OTHER CONTACT DETAILS,  
OR IF YOUR NEWSLETTER DOES NOT ARRIVE**

*please notify us by email: membership@educationotherwise.org, or by post to:  
Membership Secretary, Education Otherwise, 2 Senlac Green, Uckfield, East Sussex, TN22 1NN*

## CONTENTS

|                                       |    |
|---------------------------------------|----|
| AGM – Advance Notice                  | 1  |
| Co-ordinatorial                       | 1  |
| Geoff Harrison - obituary             | 2  |
| Young Writers Page – poems & stories  | 3  |
| Book Reviews                          | 5  |
| LOCAL GROUP INSURANCE                 | 6  |
| EO BUSINESS – official forms for AGM  | 7  |
| ARCHIVES - Back to School with Archie | 11 |
| LOCAL HOME ED GROUPS Listing          | 12 |
| EO CONTACTS – Who does What?          | 17 |

## **ANNUAL GENERAL MEETING**

of EO Association Ltd. 2017

There is no definite information yet as to when or where the EO AGM is to be held this year. Normally it takes place towards the end of October (i.e. about 4 months after the end of the financial year), but on occasion has been postponed till Jan/Feb.

**PLEASE LOOK OUT FOR FURTHER AGM  
INFORMATION ON EO WEBSITE**  
*(private member-only area)*

Usual procedure for AGMs is:

### **AGENDA ITEMS**

The ordinary business of the AGM is:

- To ratify the minutes of the previous AGM (22 October 2016)
- to consider the accounts and trustees' reports for year ended 30 June 2017
- to appoint auditors/independent examiners and
- to elect members (trustees/directors) to the Council of Management.

The AGM may also consider resolutions from EO SUMs (Signed-up-Members/ Guarantors).

The minimum number of Council members (trustees) is 6 and the maximum 15; at the time of writing there are 7 in post. Our M&As require that one-third, who have served for longest, must stand down – this applies to Jonathan Adams (elected 2014) and Fe Mukwamba-Sendall (elected 2012 and 2015).

Both may stand for re-election. The two co-opted trustees (Denise Kennell and Ljubica Temelkoska-Adams) must also stand down but may seek election. Council may propose other candidates.

SUMs of EO may also nominate/propose candidates. In this case, written notice from the proposer and signed consent from the candidate/nominee (who must also be a SUM) must both reach EO Trustees between 28 and 4 clear days prior to the AGM.

All EO members may attend AGMs, but only (SUMs) present at the AGM are entitled to vote, provided their EO subscription for family membership is up to date.

SUMs who cannot attend, may appoint a proxy to vote on their behalf.

Forms for the above procedures, including becoming a SUM, are included elsewhere in this newsletter and will appear on EO website when further information is available.

**SUMs will be sent Notice of AGM, Accounts, etc. by separate mailing.**

*NL Co-ord, on behalf of EO Trustees*

## **Co-ordinatorial**

### **CHILDREN PLEASE READ**

**(also parents)**

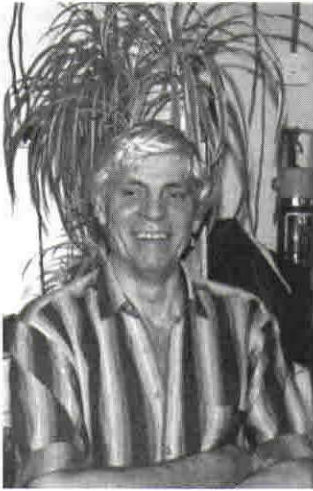
Although we only print your first name and age with your contribution, we still need to know your family surname and contact details – email, phone and postcode are most useful. This is so that we can contact you/your family if there is any query about your message or drawing.

I have recently received at least one contribution without any contact information at all – so I have been unable to print it. If you think that might be yours, please ask your parents to email, phone or write to me before next issue.

*Anne, August 2017*



## OBITUARY – GEOFF HARRISON [1935 – 2017]



I remember my first meeting with Geoff not so much for the context (I've now forgotten) but for my recollection of Geoff as a person. He had (and always had) that rugged, chiselled look and features; the hands of an intensely practical man who knew the meaning of physical work. He was suntanned and clearly spent a lot of time in the outdoors. His hair was white, wavy and longer than you'd anticipate for someone of his generation. Indeed, these physical characteristics rarely changed on any of our numerous meetings at events or the Harrison family home at Burntlands.

Geoff was a man of few, but carefully directed words. His piercing, bright eyes often revealed more. He was there; strong and reassuringly happy to let his partner Iris articulate their philosophy to life and learning.

Burntlands connects with the earth: a place to grow food, make food; to strip down, maintain and fix all manner of mechanics and engineering; to build a home and sense of place. Geoff, a plumber by trade (but so much more) was quite able to apply himself with his solution finding, problem solving disposition and skills. It was

not surprising then when the children deconstructed and rebuilt a vehicle in the barn as part of their education. The Harrisons were resourceful – typified by Geoff – and by necessity learned to live lightly, make do, fix and mend. Being intensely creative was at the heart of Geoff's personal life skills.

This creativity extended to Geoff's love of the piano which he played often. He was profoundly dyslexic but this didn't suppress his music – he learned to work round this challenge with the support of Iris. I remember watching Geoff and Iris's delight on trying and experimenting with the emerging speech-to-text software opening up a previously inaccessible world to Geoff.

Life as a pioneering home educating family brought significant challenges. Geoff and Iris had to face persecution by the authorities; the two older children being declared uneducated by the courts. All three (the youngest still a breast fed baby) were threatened with care orders. The family successfully escaped for a period to a Hebridean island where Geoff and Iris's ability to be self-sufficient and creative 'off grid' was severely tested. When the Harrison family eventually stood in the courts with the support of Roland Meighan as expert witness, a family's right to home educate was tested and established in case law. Every home educator owes Geoff and Iris a debt of gratitude for their sacrifice.

The family moved to Burntlands after their return from Scotland, and in 1993 I visited them there with Roland and Janet Meighan. Geoff and Iris refreshed us with homemade drinks and nettle soup (a culinary classic in the Harrison household) foraged from around Burntlands. We'd gone there because Geoff and Iris were ready to let us set up a base for the Centre for Alternatives in Education. In the old cow sheds where once Geoff and Iris and the family had housed and milked a herd of goats the 'uneducated' children re-designed, rebuilt and reequipped the buildings as places where offices could be established.

In the latter years Geoff was cruelly beset with dementia. This must have been so difficult for such a proud, independent, industrious and resourceful man. However, he continued to take great pleasure in his piano, which he had been playing from the age of 5 and had played during the bombing of London in the war; he played the piano earlier in the day that he died.

*Peter Humphreys, July 2017*  
*[photo: Iris Harrison]*

## YOUNG WRITERS PAGES

It's exciting that more contributions from younger members of EO families are coming in to the NL. This seems to be growing into a regular section! There's more in the pipeline, but if you'd like to add your stories, poems, drawings etc., or to make suggestions, please send them along.

We can type up from handwriting, arrange formatting, etc. Only – *please* make sure you include family contact details in case we need to get in touch with you or your parents.



Anne, EONL Co-ordinator (see inside front cover for contact details)



### *I am flying*

I am flying above the sea,  
All the spirits they follow me.  
I can see birds and farmyards too,  
The country is the place to be.  
Flying on the breeze, far and wide.  
Wafting gently to and fro.  
This is the way my life should be.  
Never hurrying, what's the need?  
Nothing to go to, nobody to heed.  
Just slow and steady, that's my rhyme.  
I will be home by dinner time!

### *Leaf*

I am swirling through the air.  
Free as a speck of dust. "I do not care".

### *Granny's house*

The wind whistles through the trees.  
The flowers dancing in the breeze.  
The birds twittering from their perch.  
The leaves budding on Silver Birch.  
The geese waddling from the coop.  
The bamboo bending in a hoop.  
Fluffy flowers floating over lawns.  
In farmers' fields new lambs are born.  
Hardworking bees are making honey,  
It's so sweet, sticky and runny!  
Hedgerows growing nice and tall.  
Creepers crawling up the wall.  
The greedy pheasants pinching food,  
Really! They are very rude!

*Let. 7*



(images from [www.openclipart.org](http://www.openclipart.org))



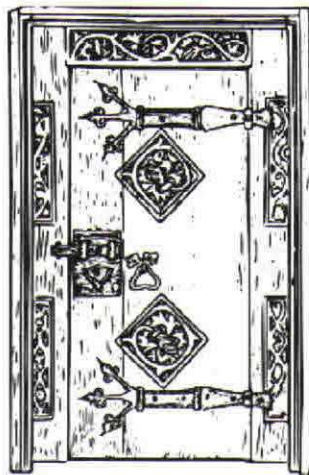
# The Empty Inn

[cont'd from last issue]

## Part Two: Inside the Inn

He was falling into darkness, the light from the doorway getting further and further away. He landed with a thump onto something squishy and springy. He lay winded for a few seconds, then got to his feet - and stood on something hard. It rolled under his foot and he fell over, landing on something else hard. He grabbed it. It felt like a torch. He found the switch and turned it on; a beam of light shot from the end. He looked round. He was in some kind of cellar that tapered down towards the far end. The thing he had landed on was a mattress. He got up and headed for the end of the cellar, and yet another door faced him.

[images from [www.openclipart.org](http://www.openclipart.org)]



## Part Three: Just Another Door

He stepped through and was faced with not just one door now - but five, ten, twenty... constantly moving, appearing and disappearing. His eyes couldn't keep up; by the time he had seen one it had gone. Solid oak doors and metal doors and ones with glass in them, all shifting position. He grabbed at a handle but it vanished just before his fingers touched it. He grabbed at another and another, and didn't notice until he had finally got hold of one that it was the only door left.



He shone the torch on the wall, but it was just dark grey stone with strange faces and gargoyles carved into it, their lifeless eyes staring at him as if daring him to open the fourth door. He took the dare and opened the door, stepping through into what seemed to be nothing...

by Amber age: 11 (The Bonefoot warrior.)

To be continued next issue. Contributions from other young EO members welcome - send to EONL Co-ordinator (address inside front cover). Apologies to former US Presidents - couldn't resist it! Anne

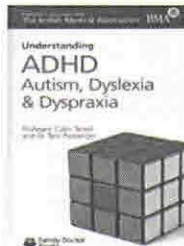


For some parents, home education is a decision made well in advance of school entry age. However for many others it is an unplanned solution due to a child not fitting into the current school system – a square peg in a round hole so to speak. There are many reasons as to why a child might not settle in school, but what continues to surprise me are the number of children diagnosed on the autistic spectrum who have displayed clear signs of autism at school; however, in the home educating environment this was hardly ever seen. The books below are ones that I have found personally useful to gain knowledge and understanding about autism and other 'learning disorders', or perhaps better stated as characteristics, that affect a child's ability to learn. I hope some other parents might find them useful too.

**Understanding ADHD, Autism, Dyslexia and Dyspraxia** Collin Terrell and Terri Passenger  
Family Doctor Publishers Ltd ISBN 978-1903474273 £4.76 or £2.49 Kindle

This book is very good at explaining ADHD, autism, dyslexia and dyspraxia in very simple language for anyone new to the subject. Each characteristic has a separate section in the book with an example story of a child's behaviour, a tick-list of associated behaviours and two traditional methods of support/treatment in a school environment; for example, for ADHD a change of diet and medication. This book is a very good first step in identifying some of the behavioural characteristics that you may recognise are affecting your child's ability to learn and settle in a school environment.

*(However, I would add that many of the behaviours also relate to other characteristics such as high IQ/gifted children, and those with lower working memory or memory processing speeds, who are often mis-diagnosed. More to come about these).*

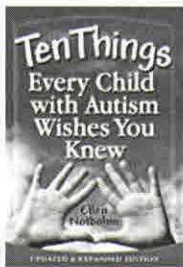


**10 Things Every Child With Autism Wishes You Knew**

Elle Notbolm Future Horizons ISBN 978-1935274650 £12.96

This is another great information book written in an easy to read format by the mother of an autistic son who went on to graduate from college, attend his prom night with his girlfriend and play team sports for college. The path to get there involved a lot of support and understanding and Notbolm has written this book in order to help other parents in similar circumstances. Particularly helpful parts include the section that describes how many behaviours are triggered by environmental, sensory or emotional factors and how it is key to identify those factors and then manage them to the point that over time they diminish. Also how

we take it for granted that children will automatically understand social situations and language, for example facial expressions and phrases such as: 'it's raining cats and dogs'. But for many children this has to be learned and therefore taught. Lastly the extremely comprehensive section on sensory triggers was incredibly informative, going well beyond the usual taste, smell, hearing, sight and touch descriptions. The author explains how children can have hypo (low) or hyper (high) sensory stimulation from each sense and other senses not usually included, for example balance, that can trigger certain behavioural responses. For example the child who has a hyper sense of hearing and can hear things like the clock ticking and the heart beat of the child beside them on top of all the other classroom sounds, or the child with a hypo sense of touch who deliberately bangs into things to feel something. Another excellent book to read and then keep on the shelf and refer to when needed, or share with others.



**It Just Doesn't Add Up – Explaining Dyscalculia and Overcoming Number Problems for Children and Adults**

Dr Paul Moorcroft Tarquin Publications ISBN 978-1911093008 £10.37

I had never heard of dyscalculia until the person who IQ tested my daughter mentioned she might have it. I put the statement in my mental pending file to see what transpired. Several years later it was clear that whilst she has a reading, spelling, and comprehension level way above her age and can whizz through non-calculative maths, she struggles to do basic calculations (adding, subtracting, dividing and multiplication) mentally without counting on her fingers. After looking for some information about dyscalculia I found this book which has helped increase my understanding of something that is not widely known about despite up to 5% of the population suffering from this condition and it being recognised by the World Health Organisation.



Dr. Moorcroft is a very accomplished former teacher and lecturer who has written many published books and been in charge of a number of high profile, million-pound military operations; but by his own admission he cannot count. After counting in millions under the table with his fingers and getting away with it for many years, he was finally forced to admit his difficulty after letting down a colleague. Following a referral to Professor Brian Butterworth, who has written the forward for the book, he was tested for dyscalculia and ended up with the lowest score ever recorded.

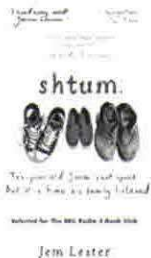
The book describes what dyscalculia is and how it affects people, with a checklist of the key symptoms. The effect on a child with dyscalculia being forced to stand up in front of a class and answer a mental maths problem is likened to being put in front of a firing squad! It also shows how other learning disorders are sometimes linked to dyscalculia, such as dyspraxia, dyslexia, time and space problems such as having difficulty telling the time; a lack of perception of time meaning constantly being late; or often getting lost, ADD and ADHD. There is information on how to test for dyscalculia and teaching dyscalculics, together with information for parents.

Another very informative book that will be a relief for any parent of a child who may experience difficulty in this subject.

**Schtum** Jess Lester Orion Publishers ISBN 978-140916 £4.79

This is a dramatic story based on the real experiences of a dad of a severely autistic 10 year old boy and the family's courageous battle to obtain local authority funding for a placement at an expensive specialist residential school that would provide a safe and stimulating environment for him. It describes in vivid detail the every-second hardship of parenting a child who cannot talk or go to the toilet and the toll that it took on the parents' marriage, friends and work. It also shows the unconditional love the family have for this amazing young boy who loved to dance naked in the garden and play with feathers, and the lengths they had to go to ensure he was given the best support in the right environment. The enormous cost and expertise that had to be deployed, almost like a military campaign, to win the court battle for the school placement highlights the plight many families go through, whilst at the same time providing a ray of hope that there are professionals who are willing to fight for our children – although they may not be affordable to most.

(There is some strong language in this book).



## LOCAL HOME EDUCATION GROUP ORGANISERS

*Thank you to those who have already renewed.*

Have YOU remembered?

### EO PUBLIC LIABILITY INSURANCE

renewal date is 1<sup>st</sup> September 2017 for the year to 31<sup>st</sup> August 2018

This benefit for Local Home Education Groups run by EO members continues at £10 per year *or part year* from 1<sup>st</sup> September; you can join at any time of year. As it is subsidised from EO funds (which means from the subscriptions EO members pay) there are some terms and conditions – for example, we ask for 3 EO family members from different households to sign up to take responsibility for the group and to keep in contact with us.

Please note that your group must comply with the description agreed with the insurance company, in accordance with the general understanding of a Home Education Group, i.e.:

- A group of home educating families co-operating to provide mutual support, sharing information and resources, and meeting for social and educational activities and/or outings.
- Activities are free (or at small contribution to cover costs) i.e. non profit making.
- Parents (or other named adults) attend with their children, who are of mixed ages.
- Usually, activities take place at a variety of venues, are organised by different parents and open to all local HE families.

Also, EO insurance cannot act as an 'umbrella' for other formally constituted organisations. For example, if your group is a charity in its own right, you will need to take out separate insurance. Detailed guidance and an application form are available to download from the Member Home area of the EO website or by email from the Local Groups Insurance Co-ordinator [lgic@educationotherwise.org](mailto:lgic@educationotherwise.org)

Thank you to those who have already renewed. If you're doing it now, please drop me an email when you post off your form and cheque; this helps me keep up with the administration. Anne



# EO SIGNED-UP MEMBER (SUM) FORM / GUARANTOR DECLARATION

## EDUCATION OTHERWISE ASSOCIATION LIMITED

### Make Sure You Have a Vote at EO General Meetings

Only Signed-up Members are entitled to vote at EO General Meetings. These include Annual General Meetings (AGMs) where Trustees are elected, and Extraordinary General Meetings (EGMs) which may take place between AGMs. Even if you are unable to attend a meeting yourself, you can still have a vote by appointing a proxy to vote on your behalf.

*N.B. Please Complete Form in BLOCK CAPITALS and sign both sections*

I (FULL NAME) ..... Membership Number\*:

of Home Address (print in full): .....

Postcode: .....

wish to become a guarantor (Signed-up Member) of Education Otherwise Association Limited ('the Association').

I confirm that I am over the age of 18 and a paid-up family member of the Association. In the event of the Association being wound up I agree to contribute up to £10 in payment of any debts and liabilities it may have incurred.

I understand that the details I give on this form will be entered on to the Association's Register of Members and that under the Companies Act 2006 it is possible for someone to request sight of or a copy of this Register for a proper purpose. The Association may then disclose the details on this form.

I further understand that in the event of my ceasing to be a paid-up family member of Education Otherwise, or if at any time I resign as a SUM by written notification to EO's correspondence address, I will cease to be a guarantor and Signed-Up Member of the Association one year later.

Signed: ..... Date .....

### Communications by email

I consent to Education Otherwise sending or supplying any document or information (including any notice) to me using electronic means. My email address for this purpose is:

Email address (please print clearly): .....

Signed: ..... Date .....

Education Otherwise will continue to send any correspondence related to your Signed-up Membership to the email or postal address given on this SUM form until the Association is advised in writing by the SUM of resignation or that the address on the Register of Members should be changed. Such changes should be notified to Education Otherwise SUMs, at EO's Registered Office Address (check current with website).

Please return this form as soon as possible to: **EO SUMs**, 2 Senlac Green, Uckfield, East Sussex, TN22 1NN

*\* If known – N.B. Membership number is shown next to your name on NL address slip*



# TRUSTEE PROPOSAL/NOMINATION - *and* - ACCEPTANCE FORM

## Education Otherwise Association Limited

Annual General Meeting (AGM) for year ending 30<sup>th</sup> June 2017 (venue & date to be arranged)

Signed-Up Members (i.e. guarantors) of EO may propose a candidate (who must also be SUM/guarantor) for election as a Trustee. At least 4 clear days' notice is required.

Written notice from the proposer, signed consent from the candidate  
And statement of EO and other experience from candidate  
must **all** reach Trustees no later than the **Monday** prior to meeting.

**Send to: EO Trustees, 2 Senlac Green, Uckfield, East Sussex, TN22 1NN**

Name of Proposing Member (please print clearly): .....

Address.....  
.....

Email: ..... Memb No\* .....

I, being a Signed Up member of Education Otherwise Association Limited, hereby propose

Name of Candidate (please print clearly): .....

who is also a Signed up Member of EO Assoc. Ltd.

of address .....

.....  
for election as a Trustee of Education Otherwise Association Ltd.

Date: ..... Signed: .....

=====  
===== section below for completion by candidate =====  
(can be on separate form)

I hereby confirm that I am a Signed Up Member of Education Otherwise Association Ltd.

I accept the nomination and am willing to stand as a Trustee.

Name of Candidate (please print clearly): .....

Address.....  
.....

Email: ..... Memb No\* .....

Date: ..... Signed: .....

*\*N.B. EO Membership Number is printed on address label of newsletter*

**Return form to: EO Trustees, 2 Senlac Green, Uckfield, East Sussex, TN22 1NN by Monday prior to meeting.**

**Nominee:** please provide a brief statement of your EO and other relevant experience, to be circulated to members and/or read out at meeting. This may be sent separately by email, to [trustees@educationotherwise.org](mailto:trustees@educationotherwise.org)



## PROXY FORM

### Education otherwise Association Limited – Annual General Meeting (AGM)

For year ending 30<sup>th</sup> June 2017 (venue & date to be arranged)

### Form of Proxy (For Signed Up Members not attending the AGM)

**N.B. See notes and instructions overleaf before completing this form.**

Please return this form of proxy as soon as possible to:

**EO Proxy, 2 Senlac Green, Uckfield, East Sussex, TN22 1NN** to arrive by **Tuesday prior to meeting** if by post.

If your proxy is bringing it to the meeting, the form must be registered by **NOON** (see notes 3 & 4)

*Please note that Proxy Forms CANNOT be sent electronically.*

Name of Member: ..... Memb. No. (if known) .....

Address: .....

Post Code:.....

I, being a Signed Up Member of Education Otherwise Association Limited, hereby appoint  
[the Chair of the meeting or] [the following named adult] (see notes 1 & 4):

(Name) ..... of address: .....

Post Code: .....

or failing that the following named adult (see notes 1 & 4):

(Name) ..... of address: .....

Post Code: .....

as my proxy to vote for me and on my behalf at the Annual General Meeting of Education Otherwise Association Limited

to be held on [INSERT DATE OF MEETING HERE] ..... and at every adjournment thereof.

Unless otherwise indicated below or by separate instruction from me, my proxy may exercise their discretion as to how they vote and whether or not they abstain from voting (see note 2).

Date: ..... Signature: .....

**[box for resolutions – if any – continue on separate sheet if necessary]**

Please indicate your desired vote individually for the resolutions by placing an 'X' in the appropriate box.

| No. of Resolution and Detail (see note 2) | YES | NO | Abstain |
|-------------------------------------------|-----|----|---------|
| Resolution 1:                             |     |    |         |
| Resolution 2:                             |     |    |         |

Date:.....

Signature:.....

**Election of Trustees** (see note 2)

Please indicate your desired vote individually for each trustee by writing in names and placing an 'X' in the appropriate box. Alternatively you may instruct your proxy separately.

(Names – **which must be received by Monday prior to meeting** - will be posted in the Member Home area of the EO website as soon as possible thereafter, and Chair of Meeting will confirm eligibility on the day)

(Voting slips including all eligible names will be available at the AGM)

| Name of Proposed Trustee | YES | NO | Abstain |
|--------------------------|-----|----|---------|
|                          |     |    |         |
|                          |     |    |         |
|                          |     |    |         |
|                          |     |    |         |
|                          |     |    |         |
|                          |     |    |         |
|                          |     |    |         |

Date: .....

Signature: .....

**Notes and instructions for Proxy form:**

Note 1

- If you wish the chair of the meeting to act as your proxy, leave these lines blank.
- If you wish to appoint a different proxy, insert the name of your proxy (and alternative proxy) in block capitals.
- If your proxy (or alternative proxy) is unable to attend the meeting, your proxy reverts to the chair unless you delete the words "the chair of the meeting or".

Note 2

- If you wish your proxy to be able to vote as they see fit, taking account of any instructions you may have given, leave this section blank.
- If you wish to instruct your proxy (or the Chair) how to vote, you may EITHER **write** in the names and place an 'X' in the appropriate box, OR provide your proxy with a separate, signed statement of your wishes.
- Names of other candidates will be posted in the 'member home' area of the EO website after closing date.

Note 3

- By completing and returning this form you are not prevented from attending the meeting in person if you later decide to do so. However, your attendance revokes the appointment of proxy. Please note that Signed Up Members wishing to attend the meeting in order to vote must arrive at the venue **by Noon** in order for the registration process to be completed.
- If, after returning a duly completed proxy form, you wish to revoke your proxy appointment you must sign and date a notice clearly stating your intention to revoke that proxy appointment and send it to the address below to arrive by **Thursday prior to meeting**.

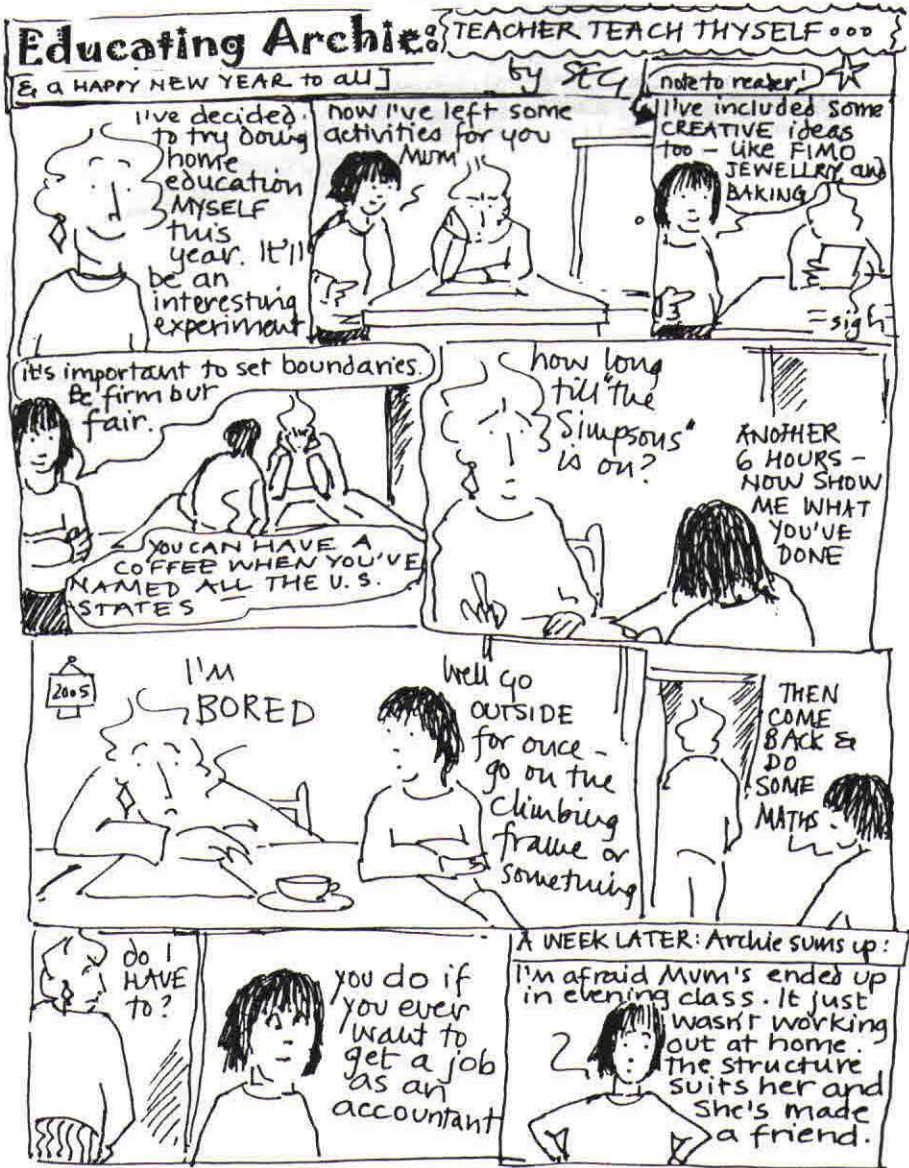
Note 4

- You must have returned a completed SUM (Signed Up Members) form to :  
**EO SUMs, 2 Senlac Green, Uckfield, East Sussex, TN22 1NN by Thursday prior to meeting if by post, or if in person to the AGM venue by Noon on the day of the meeting.**



# FROM THE ARCHIVES

Sarah Guthrie's cartoons about 'Educating Archie' appeared regularly in EO Newsletters for many years - this one is from February 2005. It seems appropriate for 'Back to School' season ...



© SEG 2004 Having been comprehensively home educated, 'Archie' eventually retired from the EONL although he continued to thrive in other publications, eventually landing a job at a bank ...



## LOCAL HOME EDUCATION GROUPS

**HE families** – Please contact the group organiser for full details and to check that activities are ongoing. Note also that not all groups are run by EO members. Further information on the groups listed below is available via the Local HE Groups area of the EO website. If you know of a group that's not listed, please ask the organiser to enter it at [www.educationotherwise.net](http://www.educationotherwise.net)

**Group organisers** – please remember when giving details of events, that this list (both in Newsletter and on main area of website) may be seen by people who are not members of Education Otherwise, and adjust your information accordingly.

Please also notify us promptly of contact & other changes via the **Local Groups Co-ordinator**: [eolg@educationotherwise.org](mailto:eolg@educationotherwise.org)

**N.B. Some groups have been removed due to lack of contact**

If you wish your group to be added on the Website and in EO Newsletter please visit the **Local HE Groups Directory on the EO website**. For queries contact **Local Groups Co-ordinator**:

[eolg@educationotherwise.org](mailto:eolg@educationotherwise.org)

## ENGLAND

### Bedfordshire

**BedHed** – for support and organising meet ups.

Contact Susan: [susanthrossell@msn.com](mailto:susanthrossell@msn.com)  
<http://bedhed.org.uk>

### Berkshire

**Expanding Horizons** – [www.expandinghorizonsuk.com](http://www.expandinghorizonsuk.com) regular meet ups, trips, activities, and information for other Local groups.  
Rebecca: 01494 882484, [expandinghorizonsuk@gmail.com](mailto:expandinghorizonsuk@gmail.com)  
**Heroes-HE** – weekly Home Education Club at animal farm, with workshops, etc. [www.heroesberkshire.co.uk/homeeducators.html](http://www.heroesberkshire.co.uk/homeeducators.html)

### Bristol

**Bristol Home Education Learn Place (HELP)** – Local support group Bristol area. Catherine: [catewhyte@hotmail.com](mailto:catewhyte@hotmail.com)  
**Home Education in Bristol and the South West** – groups, events and activities in Bristol and the surrounding areas.  
Therese: [alternativeeducation.bristol@gmail.com](mailto:alternativeeducation.bristol@gmail.com)

### Buckinghamshire

**Free Range Education** – range of educational events and activities in Milton Keynes & North Bucks. Sarah: 07725 039981  
[www.freerangeeducation.org](http://www.freerangeeducation.org)

**High Wycombe home ed group** – Friendly weekly group meet up with activities. Email: [cm2002@yahoo.co.uk](mailto:cm2002@yahoo.co.uk)

**Milton Keynes Home Educators Network (MKHEN)** – Educational and social activities and events, online support groups, mentoring and an active relationship with the LA. <http://www.mkhen.org.uk>  
Georgeanne 01908 662256 [sienna-swift7@powernet.co.uk](mailto:sienna-swift7@powernet.co.uk)

**South Bucks Home Educators** – (& surrounding areas)  
Taryn: [tarynearly@googlegmail.com](mailto:tarynearly@googlegmail.com)

<http://groups.yahoo.com/groups/southbuckshomeed>  
**Expanding Horizons** (see Berkshire).

### Cambridgeshire

**Cambridge Home Educating Community Activity List** – summary of sessions and regular groups in Cambridge. Karen: 01223 573220  
[www.educationchoice.org.uk](http://www.educationchoice.org.uk) [karen@karenrodgers.co.uk](mailto:karen@karenrodgers.co.uk)

**Cambridge Home Educating Families (CHEF)** – for parents/carers who HE or considering HE. Morag: [morag2000@hotmail.com](mailto:morag2000@hotmail.com)  
01223 464918 <http://www.cambridgehomeeducators.org.uk/>

**Cambridgeshire Home Educators** – Website all about HE-ing in Cambridgeshire including local groups and how to them.  
[www.cambshomeed.co.uk](http://www.cambshomeed.co.uk) Jane: [cambshomeed@gmail.com](mailto:cambshomeed@gmail.com)

**Little Learners (Duxford)** – Themed play-based meetings. Louise: [louise@tartarus.org](mailto:louise@tartarus.org)

### Cheshire

**Mid Cheshire Home Educators** – Bi-monthly meetings and regular outings. <http://groups.yahoo.com/group/mche>

### Cornwall

**South East Cornwall** – courses and activities including Drama, Physics and English Lit. Kath: [kafrevell@phonecoop.coop](mailto:kafrevell@phonecoop.coop)  
**Lostwithiel area HE group** – range of HE activities, all welcome!  
Karen: [kazincornwall@yahoo.co.uk](mailto:kazincornwall@yahoo.co.uk)

### Cumbria

**West Cumbria Home Education Group** – friendly group, members from all over W. Cumbria, structured or free range – All welcome!  
Tallie: [metallienat@aol.com](mailto:metallienat@aol.com)  
[www.facebook.com/groups/WestCumbriaHE/](http://www.facebook.com/groups/WestCumbriaHE/)  
**West Cumbria Home Educators** (incl. Keswick) – mutual support for HERS in West Cumbria: [WestCumbriaHomeEd@gmail.com](mailto:WestCumbriaHomeEd@gmail.com)

### Derbyshire

**Chesterfield Home Education Group (CHEG)** – weekly meetings and days out for all ages. Sandy: [sandymariott@gmail.com](mailto:sandymariott@gmail.com)  
**Derby HE Group (DHEG)** – Weekly Gym Club at sports centre with instructor. <http://groups.yahoo.com/group/derbyhe/>  
Lynsey: [lynseypvic@ntlworld.com](mailto:lynseypvic@ntlworld.com)  
**Home Ed Buxton Area** – Local meetings/activities for HERS and those considering HE  
<http://groups.yahoo.com/group/homeedbuxtonarea>

### Devon

**Dartmoor and SW Home Education Group**. Based in S. Dartmoor, All members may organise events and meet ups on our email list  
Email: [dartmoor.sw.he.group@gmail.com](mailto:dartmoor.sw.he.group@gmail.com)  
<http://dartmoor-sw-he.yolasite.com/>

**Exeter Home Education Community** Wednesday drop-in; GCSE; green woodwork, permaculture, pottery & more.  
Email: [nbedford@btinternet.com](mailto:nbedford@btinternet.com) Neil 01363 82314  
<http://exeterhomeeducationcommunity.co.uk>

**FLAGS Home Education Group** – Exeter, every Friday. Friendly group for children of all ages. Sue: [su.ryan777@yahoo.co.uk](mailto:su.ryan777@yahoo.co.uk)  
07523 982014

**Freedom Fields EHE** – Weekly social group for families  
[http://uk.groups.yahoo.com/group/PlymouthUK\\_HomeEd/](http://uk.groups.yahoo.com/group/PlymouthUK_HomeEd/)  
**Paignton and Torbay homeschooling** – social meet ups, play and activities, twice weekly. Tessa: [Tessacoles@hotmail.com](mailto:Tessacoles@hotmail.com)  
**South Devon Home Education Group** – near Totnes  
<http://southdevonhomeeducation.yolasite.com/>  
Ambuka: [ambuka5planets@yahoo.com](mailto:ambuka5planets@yahoo.com)

**Stover HE Group** – Informal educational and social meets in local and surrounding areas. Email: [stoverhegroup@gmail.com](mailto:stoverhegroup@gmail.com)

**Teignbridge and Torbay HE Group** – Teen creative writing group, meeting every fortnight. [taluhla@gmail.com](mailto:taluhla@gmail.com)

### Dorset

**Bournemouth HEED** – Weekly Monday meetings.  
Carol: [carolstone@yahoo.co.uk](mailto:carolstone@yahoo.co.uk) 01202 677066

**Bournemouth & Poole Home Educators** – play dates, trips/visits, etc. Emma: [bmth.home.ed@gmail.com](mailto:bmth.home.ed@gmail.com)  
[http://uk.groups.yahoo.com/group/Bournemouth\\_and\\_PooleHomeEducators/?yguid=419936795](http://uk.groups.yahoo.com/group/Bournemouth_and_PooleHomeEducators/?yguid=419936795).

**HERA** – friendly group meets weekly in Poole. Provides support for HE families/prospective HE. Tracie: [scallieuk@hotmail.co.uk](mailto:scallieuk@hotmail.co.uk)  
**HEoND (Home Educators of North Dorset)** – Friendly group meeting regularly in Sturminster Newton.  
June: [bugchick@mac.com](mailto:bugchick@mac.com)  
[www.facebook.com/groups/NorthDorsetHomeEducation](http://www.facebook.com/groups/NorthDorsetHomeEducation)

## Durham

**County Durham Home Educators** – information, activities, get togethers and trips. Emma, [emmadfisk@gmail.com](mailto:emmadfisk@gmail.com)  
<https://uk.groups.yahoo.com/group/durham-home-educators> :  
**Durham HE** – Yahoo group. Get-togethers arranged in various areas of County <http://groups.yahoo.com/group/County-durham-homeed>

## Essex

**Essex Home Education Yahoo Group** – Members organise HE events and meetings in Essex, and offer support, information and encouragement to other Home Educators.  
Lena: [essexhomeedmod@btinternet.com](mailto:essexhomeedmod@btinternet.com)  
<https://groups.yahoo.com/neo/groups/essex-he-e-group/info>  
**Haverhill HE group** – Covering South Suffolk/North Essex.  
Eve: 01440 788228 or 07768 763913 [wixde@yahoo.co.uk](mailto:wixde@yahoo.co.uk)  
**Southend HE Group** – Meets weekly. Lots of outings and activities.  
<http://groups.yahoo.com/group/southendhomeeducation/> or  
Email: [southendhomeeducation@yahoo.co.uk](mailto:southendhomeeducation@yahoo.co.uk)  
**WIGWAM Epping Forest** – A weekly informal drop-in group.  
Eleanor Stapleton 07866 701442 [elmajose2@yahoo.co.uk](mailto:elmajose2@yahoo.co.uk)

## Gloucestershire

**Forest of Dean HE group** – Bridge and dam building, river clearance, fire building, woodland walks etc.  
Roxy: [cdsnhf@googlemail.com](mailto:cdsnhf@googlemail.com)  
**Glos HE** – HE links and local resources in and around Gloucestershire. [www.gloshe.org.uk/](http://www.gloshe.org.uk/)  
**Glos Otherwise Club** – Fiona 01684 290087 or Email: [brookesfam@tiscali.co.uk](mailto:brookesfam@tiscali.co.uk)  
**Stroud email list** – different activities arranged via email list.  
Nick: [nick\\_nickweir.co.uk](mailto:nick_nickweir.co.uk) 01453 840036

## Hampshire

**ActiveEO** – West Sussex and Hants <http://www.activeeo.com/>  
self-help group for home educators living near the south coast:  
Cate: [bevmats@btinternet.com](mailto:bevmats@btinternet.com)  
**Basingstoke Under 10s** – Academic club plus regular meet ups in different locations. Vanessa: [education@zee2a.com](mailto:education@zee2a.com)  
**East Hampshire Home Education Group (EHHE)** Social activities mainly for 5-11 yr but all ages welcome. Fields & playground.  
Alison: [a.johns@btinternet.com](mailto:a.johns@btinternet.com)  
**FAREGOS Home Education Group** – Fareham, Gosport, 5. Hants. Several meetings each week for sports, social activities, art, maths and English tuition for GCSE.  
<http://groups.yahoo.com/group/FareGosHE/>  
**Hampshire FRHEBEEES (Free Range & Home Educated Bees)** – West Hampshire area and borders to arrange meet ups and activities. <http://groups.yahoo.com/group/FRHEBees/>  
Karen: 01425 652721  
**Home Education Network Hants**, near Winchester, ages 0-13. Range of activities + regular club. [homeednetwork@outlook.com](mailto:homeednetwork@outlook.com)  
**North Hampshire HE Group** – Regular activities and meetings organised, suitable for all ages. Email: [jakimparsons@gmail.com](mailto:jakimparsons@gmail.com)  
<http://uk.groups.yahoo.com/group/NH-HE/> Jaki 07731 805323  
**Portsmouth Home Education Group** – HE or interested in HE <http://groups.yahoo.com/group/portsmouthhomeed/>  
**SEEDS** – Southampton, every term time afternoon for sports/play + weekly full day activity. <http://groups.yahoo.com/group/seedsl/>

## Herefordshire

**Hereford Home Education** – Indoor and outdoor facilities ages 3-15. Email: [herefordhe@gmail.com](mailto:herefordhe@gmail.com)

## Hertfordshire

**Barnet Home Educators Hub** – where children can grow and develop together and friendships are formed. Contact: [szteIn@yahoo.com](mailto:szteIn@yahoo.com)  
**Herts Home Educators** – Yahoo! group for Hertfordshire home educators. Email: [newhomeeducators@gmail.com](mailto:newhomeeducators@gmail.com)  
**Learning Begins In Wonder** – Free and subsidised events, resources and support to HE families in Hertfordshire and surrounding counties. Mandy: [mandy.ansell@aol.co.uk](mailto:mandy.ansell@aol.co.uk)

## Isle of Wight

**Isle of Wight Learning Zone** – Network of HE Families <http://www.iwlearningzone.co.uk/>  
**IW Home Ed** – Facebook & yahoo group for any and all home educators on IoW. Karen: [Karen@curvespace.com](mailto:Karen@curvespace.com) or 01983 568516 <http://groups.yahoo.com/group/IWHomeEd/>  
<https://www.facebook.com/groups/IWHomeEd/>

## Kent

**Dragonfly Kidz HE Group** – (Canterbury & Thanet) social & learning activities, swimming, bowling, days out etc. Wide range of locations around Canterbury/Thanet/Whitstable. All Welcome!  
Steph: [stephgater@rocketmail.com](mailto:stephgater@rocketmail.com) 01304 814362.  
<http://groups.yahoo.com/group/dragonflykidzhomeeducationgroup/>  
**HEarts & Minds** – Hernehill, various games, arts, crafts and organised activities. Davinia: [daviniaedmunds4@gmail.com](mailto:daviniaedmunds4@gmail.com)  
**Kent ASD Home Ed** – For parents/carers of ASD/Aspergers children who are educating them 'otherwise'.  
<http://groups.yahoo.com/group/osd-home-ed-medway>  
**Medway and Maidstone HE activity group (HE Omega)** – Group of home educating families in Medway and Kent.  
<http://groups.yahoo.com/group/HE-omega/>  
Esther: [e.selhi@yahoo.co.uk](mailto:e.selhi@yahoo.co.uk)

**Rochester HE Group** – weekly meetings Tuesday afternoon.  
Sally: [sally\\_wilton@lineone.net](mailto:sally_wilton@lineone.net)

**SATHE (Supporting Autism Through Home Education)** – West Kent group open to all parents/carers HE/flexi-schooling or considering HE for children with autism/sensitivities or learning difficulties. <http://uk.groups.yahoo.com/group/S-A-T-H-E/>  
Denice: 07554 386844 or Email: [S-A-T-H-E@yahoogroups.com](mailto:S-A-T-H-E@yahoogroups.com)  
**South East Home Educators** – (Kent/Sussex) Meet regularly for trips, hall meets, swimming etc. To join Yahoo! group email: [southeasthomeeducators-subscribe@yahoogroups.com](mailto:southeasthomeeducators-subscribe@yahoogroups.com) or Lesley: [lesley294@aol.com](mailto:lesley294@aol.com) 07828 193 668

## Lancashire

**Boneheds** – Help support information and friendship to families home educating (or considering HE) in Bolton Lancashire and surrounding districts. <http://groups.yahoo.com/group/boneheds/>  
**Home Ed Leyland** – Friendship, support and advice for all families who are home-educating (or considering HE) in Leyland and surrounding districts. <http://groups.yahoo.com/group/he-l-ld/>  
**LEAD Home Education** – swap ideas, share stories and arrange local social gatherings. [http://groups.yahoo.com/group/lead\\_he/](http://groups.yahoo.com/group/lead_he/)

## Leicestershire

**HE-AL message board** – details of HE Events in Leicestershire. Site run by local HE groups, but open to all HErs in the Leicestershire area. <http://he-al.weebly.com/index.html>  
**Leicestershire Christian Home Educators** – monthly meet up every 3rd Tuesday. Free play opportunity in a safe and fun place. HE Off-Peak Pass available: £1.50 per child £5 per family, free drinks. All welcome! Email: [mrsamarshall@googlemail.com](mailto:mrsamarshall@googlemail.com)

**Loughborough Home Ed** – meet for various regular/one off groups, including French and maths in Loughborough. Email: [nicky-ed@co.asd.me.uk](mailto:nicky-ed@co.asd.me.uk)

**Stoneygate** – Weekly play session, £3.50 per family, including drinks. Large, safe, grassy area. Cat: [catbelling@gmail.com](mailto:catbelling@gmail.com)  
[www.facebook.com/groups/homeedleicestershire/](http://www.facebook.com/groups/homeedleicestershire/)

## Lincolnshire

**Home Ed Lincs** – Yahoo newsgroup coordinating HE activities in Lincolnshire. [http://groups.yahoo.com/group/home\\_ed\\_lincs/](http://groups.yahoo.com/group/home_ed_lincs/)  
**Homeschool Lincolnshire** – active and supportive group, 40+ families incl. plenty of teenagers. Monthly events & activities list. Elaine: [homeschool.lincolnshire@outlook.com](mailto:homeschool.lincolnshire@outlook.com) 01507 328688

## London

**Adventures with Education (Hackney)** – HE group  
<https://adventureswitheducationhackney.wordpress.com/>

**Brandam Readers** – Weekly meetings in term time.  
[rubbyradburn@hotmail.com](mailto:rubbyradburn@hotmail.com)

**Home Study Groups** – small group of HE families pooling resources for tutored home study groups.

Inglie: [iberritt@gmail.com](mailto:iberritt@gmail.com) 0203 566 8706

**Maggie Home Educators (East London)** – Fun, play and socialising for HE families. Phil: 0208 500 1053

**The Otherwise Club (NW)** – A community centre for HE families.  
<http://www.theotherwiseclub.org.uk/> 07952 616 352

**WIGWAM** Jubilee Park N9. Informal drop-in group for families with children of any age. Eleanor: [elmajose2@yahoo.co.uk](mailto:elmajose2@yahoo.co.uk)  
07866 701442

## Norfolk

**Home Education in Norfolk (HENs)** – Group for HE families in Norfolk. Those on the borders also welcome.

<http://groups.yahoo.com/group/homeeducatorsnorfolk/>

**Home Ed Discoverers** – Norwich area; events, parties, trips, days out etc. Vikki: [Watts85.rv@gmail.com](mailto:Watts85.rv@gmail.com)

**The Barefoot Learners** – Games and activities for all ages. Be Coffin: 07814 592 290 or 01263 73 99 83

**West Norfolk Home Educators** – Meeting place for HEs and families interested in home educating. Lots of activities!  
<http://uk.groups.yahoo.com/group/WestNorfolkHomeEducators/>

## Northamptonshire

**Northants HE** – Informal group meets regularly for various activities <http://www.northantshe.org.uk/>

## Nottinghamshire

**Notts Sheep Special** – Online support group for HE parents of special needs/differently-abled children in Nottinghamshire & bordering counties.

[http://uk.groups.yahoo.com/group/Notts\\_Sheep-Special/](http://uk.groups.yahoo.com/group/Notts_Sheep-Special/)

**Non School Nottingham** – Online hub for info about events, classes, meetups, and local Facebook or email groups, for finding home ed community in the Notts area.

Website: <http://www.non-school-nottingham.org.uk/>

Contact: [info@non-school-nottingham.org.uk](mailto:info@non-school-nottingham.org.uk)

## Oxfordshire

**Expanding Horizons** (See Berkshire).

**Oxfordshire Home Educators** – A group for all home educators living in Oxfordshire and neighbouring counties; all welcome.  
<http://groups.yahoo.com/group/OxonHE/>

## Shropshire

**Inspire HE Group**. Educational activities in Shropshire. Families from Shropshire and surrounding areas welcome to find out more. Alison: [fellows-weir@megmog.plus.com](mailto:fellows-weir@megmog.plus.com)

**Oswestry and surrounds**. Regular meetings around area. Katie: [llanfyllinhe@gmail.com](mailto:llanfyllinhe@gmail.com)

**Otherwise Engaged** – Online diary of group activities, cultural events, workshops, resources and projects for Shrops and West Mids based HE families.

<http://www.otherwise-engaged.org.uk/home-education.html>

**Rushbury/Stretton HE Group** – Parent and child-led activities & people from the wider community. Beverley: 01743 718429

**Shropshire Home Education** – For HEs in Shropshire area to chat arrange meets etc. <http://groups.yahoo.com/group/shed>  
**Telford area HE** – Activities incl. Skating, football and drama sessions. Denise: 07866 888879

## Somerset

**Bath HE Yahoo! Group** – <http://uk.groups.yahoo.com/group/BathHomeEducation/>

**Bridgwater Home Education** – weekly social meet + *ad hoc* trips and activities. Contact: [Mfstainer@gmail.com](mailto:Mfstainer@gmail.com)

**HEY Yeovil** – All HE families welcome. Lyn: 01963 23669  
[heyevail@hotmail.com](mailto:heyevail@hotmail.com)

**North Somerset HE Group** – Weekly children's gym, walks, outings etc, Yahoo! group for members. Vicky: 01275 848425

[victoria.preston@yahoo.co.uk](mailto:victoria.preston@yahoo.co.uk)

**Taunton Home Education Group** –

Regular events and meet ups in Taunton; range of classes and workshops across Somerset [www.tauntonhomeeducation.com](http://www.tauntonhomeeducation.com)

Email: [tauntonhomeeducation@gmail.com](mailto:tauntonhomeeducation@gmail.com)

**Wiveliscombe/Taunton** – Monthly meetings and regular outings. Maggie: 01984 624651

## Staffordshire

**Growing Wild** (was Forest Unschool) meet weekly for gardening, social, play, crafts, activities and nature walks. Children of all ages welcome. Ely: [elyweir@gmail.com](mailto:elyweir@gmail.com)

## Suffolk

**Haverhill HE group** – South Suffolk/North Essex.

Eve: [wixde@yahoo.co.uk](mailto:wixde@yahoo.co.uk) 01440 788228 or 07768 763913

**Ipswich HE Wednesdays** – Shared lunch and activities.

Emma: [emma@nattyem.co.uk](mailto:emma@nattyem.co.uk)

**Ipswich town centre group + Book Club** – regular meetings.

Lisa: [llw\\_llg@yahoo.co.uk](mailto:llw_llg@yahoo.co.uk) 07538 102322

**Tostock HE Group** – All families welcome to this very friendly group. Jan: [angusto@btinternet.com](mailto:angusto@btinternet.com) 01359 251184

## Surrey

**Dorking Home Educators** – fortnightly. Social and pre-booked activities, outings & trips.

Amanda: [schrodingerscat81@hotmail.com](mailto:schrodingerscat81@hotmail.com)

<http://groups.yahoo.com/groups/DorkingHomeEducators/>

**Forest Families** – weekly meetings in Croydon. Sharing food, cooking & unstructured play in nature.

Maria: [mariaf.reyna@gmail.com](mailto:mariaf.reyna@gmail.com)

**Home Educators Learning Project (HELP)** – educational support, outings. <http://uk.groups.yahoo.com/group/HELearningProject/>

**Leatherhead Home Education Group** – Leatherhead and surrounding area regular day trips and activities.

Christie: [christabelthorpe@hotmail.com](mailto:christabelthorpe@hotmail.com) 07840285703

**Surbiton Home Ed Group (SHED)** – occasional field trips, picnics, workshops, etc. Ingrid: [ingrid.meaker@mac.com](mailto:ingrid.meaker@mac.com)

**Sutton/Epsom HE group** – Meets weekly and also monthly for outings. Neia: [neia.glynn@btinternet.com](mailto:neia.glynn@btinternet.com)

**SW Surrey Home Ed** – Group for HE families based in SW Surrey and surrounding area. Weekly gatherings Farnham or Godalming.

<http://www.swsurrey-home-ed.co.uk/index.php>

## Sussex

**ActiveO** – HE Group W Sussex and Hants (see Hampshire)

**Brighton and Hove Home Educators** – Information on HE events and groups in the area. <http://bhhe.wordpress.com/>

<http://groups.yahoo.com/group/bhhe/>

**Eastbourne EO Group** – Regular gatherings & activities.

<http://www.shinies.org.uk/>

to an activity [www.harhe.btck.co.uk](http://www.harhe.btck.co.uk) Catherine: 01424 812213

**HEDGE Home Ed Group** – Hastings/St. Leonards weekly social meetings + trips etc. [www.hedge-education.btck.co.uk](http://www.hedge-education.btck.co.uk)

Beshlie: 01424 812870

**JIGSAW** – social events, educational group excursions, curriculum support, etc. Email: [leliot@gmail.com](mailto:leliot@gmail.com)

**South East Home Educators** – (Kent/Sussex) see Kent

**Wealden Home Educators' Network (WHEN)** – see Kent.

## Warwickshire

**Creative Youth Adventure Club (Coventry)** – monthly HE Group for all ages, activities and social get together. Also Arts Awards. Sarah: [sarah@nellyb.co.uk](mailto:sarah@nellyb.co.uk)

**Warwick District HE** – Warwick/Leamington. Primarily for 0-11 but all welcome. Weekly meet for play etc. + trips etc. Alison: 07782 299181 <http://groups.yahoo.com/groups/warwickhe>

## West Midlands

**Cradley HE Group** – small group of families meeting weekly for friendships and craft activities in Cradley Heath. Kate: [katestrickland@yahoo.co.uk](mailto:katestrickland@yahoo.co.uk)

**F.R.E.E. HE Group** (Shropshire) – Free Range Exciting Education Group meets once a week for a variety of fun & educational activities including trips. Jan: [freeheg@yahoo.co.uk](mailto:freeheg@yahoo.co.uk)

## Wiltshire

**Salisbury Plain Home Education Circle** – Parents who use the National Curriculum as guidance but believe best education from experience. Dee: [dee.dilloway@yahoo.com](mailto:dee.dilloway@yahoo.com) 07753 260317

## Worcestershire

**Bewdley HE Group** – Weekly meetings, social/activities etc. all welcome. Sophie: [s.o.moore@hotmail.co.uk](mailto:s.o.moore@hotmail.co.uk) 01299 405196

**Worcester Home Educators** – Meetings usually at least weekly throughout term time at various locations round the county. [www.worcestershire-home-educators.co.uk/](http://www.worcestershire-home-educators.co.uk/)

**Worcestershire Home Ed** – Yahoo Group Email list for Worcs HErs <http://groups.yahoo.com/group/worcestershirehome-ed/>

## Yorkshire

**Free Range Home Education** – playgroup, babies to 8ish, HE or considering it. Sheffield. Fi: [fhennesy81@gmail.com](mailto:fhennesy81@gmail.com)

**HENNEY (Home Education Network North East Yorkshire)** Regular meet ups around Scarborough and East coast area.

Lisa: [lisa\\_riley@tiscali.co.uk](mailto:lisa_riley@tiscali.co.uk) [henney-owner@yahoogroups.com](mailto:henney-owner@yahoogroups.com)

**Huddersfield Art Workshops** – Monthly 8 yrs plus.

Jane: 01484 645034

**Huddersfield Book Group** – Monthly Marsden library.

Jane: 01484 645034

**Huddersfield Home Educators** – Monthly themed meetings.

<http://groups.yahoo.com/group/wyhec/> or Mandy: [meandchi7@yahoo.co.uk](mailto:meandchi7@yahoo.co.uk) 01484 460026

**NYHEC (group for HE parents)** – for parents HEing in North Yorkshire. Email: [nyhecowner@yahoogroups.com](mailto:nyhecowner@yahoogroups.com)

**North + West HE Group** – Meets Skipton monthly and Bradford Gym Club weekly. Regular meetings and outings.

Judith: 01756 791356

**Rotherham Home Education** – friendly informal group for HErs in & around S. Yorkshire. <http://groups.yahoo.com/group/RothHE/>

Pauline: [callicecandydog123@yahoo.co.uk](mailto:callicecandydog123@yahoo.co.uk) 077764 06409

**SYHEC – Yahoo!** group for parents HEing in South Yorkshire.

<http://groups.yahoo.com/group/syhec/>

**SYHEC South Yorkshire Home Education Communication** –

Email group for home educators in the South Yorkshire area.

Contact: [inglefamily@hotmail.co.uk](mailto:inglefamily@hotmail.co.uk)

**Wildings** – Huddersfield. Drop-in group with Montessori resources, held in 10-week Seasons, for local HE families to meet others and support their children's interests through play

Penny: [pennyclarkson@yahoo.co.uk](mailto:pennyclarkson@yahoo.co.uk)

**Yorkshire Home Edders Yahoo! group** – Friendly & active group with visits & workshops for children 8-16.

<http://groups.yahoo.com/group/yorkshirehomedders/>

## Regional Groups (England)

### East of England –

**East Midlands – East Midlands HE Yahoo Group (EMHE)**

inform & support HE families in E. Midlands.

<https://groups.yahoo.com/neo/groups/emhe/info>

Katya: [katyalamb@aol.com](mailto:katyalamb@aol.com)

**North East England – North East Home Educators** Thriving

group with several activities in the region happening every day!

We welcome new members. Treena: [treenafenwick@gmail.com](mailto:treenafenwick@gmail.com)

### South East

**ActivEO** – HE Group based in West Sussex and Hampshire

[See Hampshire for details]

**Home-EASE (Home Education for all South East)** – Group of HE

families in SE England. [homeeducatingmum@yahoo.co.uk](mailto:homeeducatingmum@yahoo.co.uk)

0753 1677 083

**South East Home Educators** – (Kent/Sussex) See Kent for details.

### South West

**Home Education Centre (Devon/Dorset/Somerset)** –

<http://www.homeeducationcentre.org.uk> Parent run co-operative group for HE families in Somerset, Dorset and Devon.

Julie: [julia@homeeducationcentre.org.uk](mailto:julia@homeeducationcentre.org.uk)

**HErs and Events SW** – network to support new HErs or those new

to the area. New input welcomed. [southdevonlc@gmail.com](mailto:southdevonlc@gmail.com)

<http://hecontactssandeventssw.yolasite.com>

**HE in Bristol and SW** – see Bristol

### West Midlands

**HELM** – home education group located mainly within the

Birmingham, West Midlands area. Any and all HE families

welcome. [http://groups.yahoo.com/group/HELM\\_home\\_ed/](http://groups.yahoo.com/group/HELM_home_ed/)

## Isle of Man

**Home Educating Network – Isle of Man** – informal group of parents HEing on the Isle of Man.

Yvonne: [isleofmanlc@educationotherwise.org](mailto:isleofmanlc@educationotherwise.org)

<http://uk.groups.yahoo.com/group/hen-iam/>

**Home Education on the Isle Of Man** –

Dawn: [sewellbunch@yahoo.co.uk](mailto:sewellbunch@yahoo.co.uk)

## WALES

### Mid Wales

**AberSHEd (Aberystwyth Special Home Education)** Special needs group in Aberystwyth area. Anna: [annaandrich@googlemail.com](mailto:annaandrich@googlemail.com)

**Cardiganshire** – Lampeter home-ed group meets one afternoon per week. Social with occasional activities.

[thislittlelightofmine@phonecoop.coop](mailto:thislittlelightofmine@phonecoop.coop) Mia: 01570421529

**New Leaf HE Group** (Newtown, Powys) – Occasional meetings for varied activities all ages. Email: [siouxcatsy@yahoo.co.uk](mailto:siouxcatsy@yahoo.co.uk)

**Shiny Happy Children** – Regular meetings in Llanfyllin and surrounding areas. Katie: [llanfyllinHE@gmail.com](mailto:llanfyllinHE@gmail.com)

### North Wales

**Creative Learning and Support (Gwynedd)** – meet every Wed. pm

in Bangor. Julie on 01286 678181 or Sarah on 01248 355182

**Froncsyllite HE group** (Denbighshire) – Fortnightly group meets 10-4pm. Social play and chat. Email: [vivodsam@gmail.com](mailto:vivodsam@gmail.com)  
**Flintshire Home Education** – Regular meet ups activities & support. Email: [flintshirehomeeducation@yahoo.co.uk](mailto:flintshirehomeeducation@yahoo.co.uk)  
**Langower HE Group** (Gwynedd) – Weekly meetings. Email: [rowenna73@hotmail.com](mailto:rowenna73@hotmail.com)  
**PLANT Conwy** – Weekly get togethers in the village of Conwy for Home edders - all welcome. Email: [lily@ogge.co.uk](mailto:lily@ogge.co.uk)

### South East Wales

**Abergavenny HE Group** – monthly meetings at Abergavenny on first Wednesday of each month. £3 per family. John: [john.cranna@btconnect.com](mailto:john.cranna@btconnect.com)  
**Bridgend HE Community** – free play, GCSE classes, Arts Award, John Muir Award, outside speakers, activities etc. Emma: [emmr75@gmail.com](mailto:emmr75@gmail.com)  
**Cardiff HE Group** – Meets Mondays during term time, Pontcanna. Social group children all ages, all welcome. Sarah: [cardiffhomeeducationgroup@gmail.com](mailto:cardiffhomeeducationgroup@gmail.com)  
[www.cardiffhomeeducationgroup.wordpress.com](http://www.cardiffhomeeducationgroup.wordpress.com)  
**Monmouth Home Educators** – Meet weekly for fun and friendship, arts, crafts, games and sports. All ages welcome. Check for dates and times. Roxy: 07765 058 777  
**New Foundations HE** – Meets Cardiff weekly. Varied activities, all free. <http://www.newfoundationshe.com>  
07913 955583. Email: [newfoundationshe@virginmedia.com](mailto:newfoundationshe@virginmedia.com)  
**Solid Foundations** (Neath Port Talbot) – Low cost or free activities, sessions and trips for all ages/abilities. Hayley: [hayleydraco@gmail.com](mailto:hayleydraco@gmail.com)  
**Swansea Home Educators** – EHE families from Swansea and surrounding areas. Eleanor: [eleanoreva@aol.com](mailto:eleanoreva@aol.com)  
**Usk Home Education** (Monmouthshire) – Monthly (Thurs) meet other HERS in the area for fun and games and cups of tea. Roxy: [cdshnf@gmail.com](mailto:cdshnf@gmail.com) or 01989 768 128  
**Valleys HE Community** (Glamorgan) – meet weekly, for games, free play and activities. Contact: [louisejherbert@googlemail.com](mailto:louisejherbert@googlemail.com)  
<http://groups.yahoo.com/group/HerefordshireHE/>

### South West Wales

**Carmarthen HE Group** – Regular meetings in Johnstown, Carmarthen. Email: [caroline.milburn@yahoo.com](mailto:caroline.milburn@yahoo.com)  
**Carmarthen Home Ed** – Social group meeting weekly for play and chat, indoor and outdoor activities for all ages. Sarah: [birdgirlvintage@yahoo.co.uk](mailto:birdgirlvintage@yahoo.co.uk)

### Regional Groups (Wales)

**Cymru ALN - HE & EOTAS: (Wales, Special interest and SEN)**  
Wales-wide support group for Home Educators of children & young people with Additional Learning Needs, (SEN). Email: [cymrualn@gmail.com](mailto:cymrualn@gmail.com)  
**Elective Home Education Wales** – Linking HE families across Wales. <http://www.ehew.co.uk>  
**Monmouth/Hereford/Gloucester** – for information about group activities in the Monmouth/Hereford/Gloucester area. Local EO member Roxy: [cdshnf@googlemail.com](mailto:cdshnf@googlemail.com) 01989 768128  
**New Foundations** – HE group/ charity, social & educational activities and support, Cardiff/South Wales. Every Mon 10am - 3pm. All HE families welcome. [www.newfoundationshe.com](http://www.newfoundationshe.com)  
Jayne: [newfoundationshe@virginmedia.com](mailto:newfoundationshe@virginmedia.com) Or 07913 955583  
**South Wales Home Educators Network** – Email list for Home Educators in and around S Wales to arrange get-togethers/events, share ideas & news and offer support. <http://groups.yahoo.com/group/swhen/>

### CHANNEL ISLANDS

**Home Education Jersey** – Home education group. Jess: [homeeducationjersey@gmail.com](mailto:homeeducationjersey@gmail.com)  
**Guernsey Home Educators** – Group of home educators and those sympathetic to home education in Guernsey. Email: [legguernsey@gmail.com](mailto:legguernsey@gmail.com)

### NORTHERN IRELAND

**HEdNI (Home Education Northern Ireland)**. Umbrella group for the whole of Northern Ireland; where a diverse community of smaller local groups and individual home educators can come together for peer support & information, to advertise and find events, and make connections. Sarah: [sarah@hedni.org](mailto:sarah@hedni.org)

### SCOTLAND

**Edinburgh & Beyond Home Educators** – <http://www.ebhe.org.uk>  
Large online network of families, wide variety of groups, many different social and educational activities in & around Edinburgh. Email: [@ebhe.org.uk](mailto:@ebhe.org.uk)  
**Home Education/Schooling Aberdeenshire and Aberdeen** lots of educational meets. Email: [mykidshomeschool@yahoo.com](mailto:mykidshomeschool@yahoo.com)

### International (UK based)

**HE-DS (Home Educating a child with Down's syndrome)** – Linking families who are home educating a child with Down's syndrome. <http://www.oakwellbarns.co.uk> Facebook group (private, by invitation) by email to: [oakwellbarns@gmail.com](mailto:oakwellbarns@gmail.com)

### Parents Please Note ....

**HE families** – Please contact the group organiser for full details and to check that activities are ongoing. Note also that not all groups are run by EO members. Further information on the groups listed above is available via the Local HE Groups directory on the EO website.

If you know of a group that's not listed, please ask the group organiser to enter it at [www.educationotherwise.net](http://www.educationotherwise.net) or email EO Local Groups Co-ordinator: [eolg@educationotherwise.org](mailto:eolg@educationotherwise.org)

### VOLUNTEER VACANCIES

EO relies on the generous support of both members and volunteers who feel it is important to contribute to the home education community. We have a number of different volunteer roles available to suit; whether you have many hours to spare or just a few minutes. Please contact the trustees if you would be interested in taking part. Roles include:

- Enquiry line volunteer (phone) - Answering enquiries and giving information and support
  - Trustee - Help to set the strategic direction of the charity and ensure that we continue to provide a public benefit.
- Please email [trustees@educationotherwise.org](mailto:trustees@educationotherwise.org) if you are interested in volunteering in any way. There is no obligation and we will be happy to discuss with you what is involved.

## Who does What in EO

### Current Trustees [Council Members]

*trustees@educationotherwise.org*

**Jonathan Adams** (Publications Secretary)

*jadams@educationotherwise.org*

**Tom Crellin** (Treasurer, Secretary)

*tcrellin@educationotherwise.org*

*treasurer@educationotherwise.org*

**Graeme Evans** (Membership Secretary)

*g.evans@educationotherwise.org*

*membership@educationotherwise.org*

**Denise Kennell**

*d.kennell@educationotherwise.org*

**Fe Mukwamba-Sendall** (Chair)

*fmukwambasendall@educationotherwise.org*

**Barry O'Donovan** (Enquiries Secretary)

*b.odonovan@educationotherwise.org*

**Ljubica Temelkoska-Adams**

*l.temelkoska.adams@educationotherwise.org*

N.B. Email to: ***trustees@educationotherwise.org***

goes to all trustees

Address for general correspondence by letter:

**Education Otherwise** [insert Dept. If known]

**2 Senlac Green, Uckfield, East Sussex, TN22 1NN**

*[This is EO's new address, but the Swaffham PO*

*Box will still operate for a while]*

**WEBSITE:** *www.educationotherwise.org*

**Webmaster:** Tom & Denise

*webmaster@educationotherwise.org*

### Membership

Membership enquiries, address changes, membership cards, new member admin: please contact the

Membership Secretary:

*membership@educationotherwise.org*

or by post to: **EO Membership,**

**2 Senlac Green, Uckfield, East Sussex, TN22 1NN**

*[also address for general correspondence]*

## Other Useful Contacts

**Anti-Bullying Contact:** Kathleen Thompson

01942 89 77 79

**Benefits & Work Guides:**

*send@educationotherwise.org*

**GCSEs at Home:** Louise 08445 003 688

**GCSE/Exams email list:**

*http://groups.yahoo.com/group/HE-Exams-*

*GCSE-A\_AS\_Levels-OU-Others/*

**HE Exams Wiki:** *www.home-education-exams.org.uk*

**Exam Centres list:** *http://he-*

*exams.wikia.com/wiki/Finding\_an\_exam\_centre*

**Concessions Co-ordinator:** Cornelia Theunissen

*c.theunissen@educationotherwise.org*

**Dylexia Contact:** Iris Harrison

*Irisharrison6@aol.com*

**EO Stalls:** Habiba Willow

*<habibawillow108@gmail.com>*

**Flexi-schooling:** VACANT

**Local Contacts Co-ordinator:** Lei Ashe

*lei Ashe <lei.ashe@hotmail.co.uk>*

**Local Group Insurance:** Anne Rix 01760 441810

*lgic@educationotherwise.org*

**Local Groups Listings:** Kennell Family

*eolg@educationotherwise.org*

**Newsletter Coordinator:** VACANT (Anne Rix: Acting)

*eonl@educationotherwise.org*

**School Anxiety Support:** VACANT

**Single Parent Contact:** Sam Kruger 08445 003794

*singleparent@educationotherwise.org*

**Special Needs:** Alisa: 01458 448286 / 07401 421903

*send@educationotherwise.org*

**SEND email list** via: *http://www.he-special.org.uk/*

**Volunteer Co-ordinator:** Wendy Knight

*vol-coordinator@educationotherwise.org*

# education otherwise

Education Otherwise is a membership organisation, which provides support and information for families whose children are being educated outside school, and for those who wish to uphold the freedom of families to take direct responsibility for the education of their children.

Our principal aims are to:

- encourage learning outside the school system;
- reaffirm that parents have primary responsibility for their children's education and that they have the right to exercise this responsibility by educating them out of school;
- establish the primary right of children to have full consideration given to their wishes and feelings about their education;
- promote knowledge, understanding and acceptance of education otherwise than at school in the world at large.

Education Otherwise Association Ltd.

**2 Senlac Green, Uckfield, East Sussex, TN22 1NN**

Helpline 0845 4786 345

Web Site: <http://www.educationotherwise.org>

Education Otherwise Association Ltd., Registered Charity No. 1055120

A company limited by guarantee and registered in England and Wales No. 01917107

Registered Office Address: 2 Senlac Green, Uckfield, East Sussex, TN22 1NN

